

# INTRODUCTORY CATALOG



## Dear Interested Customer,

Our company is the first digital wallpaper factory in Hungary and has the most complex technological machinery and industrial production capacity in the region.

Our own import of raw materials ensures that we can create wallpaper surfaces that best adapt to the customer's needs, with the best fit of quality and structural properties, with uniquely designed graphics.

Tamal Art realizes any interior design, be it a ready-made concept or an idea formulated in theory.

In addition to unique ideas, Tamal Art also started designing its own wallpaper collections, in cooperation with excellent designers. We regard your country and the entire region as a priority market in our export efforts.

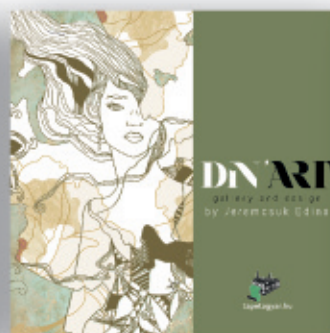
## Our wallpapaer books:



*Varrodesign*



*Luan by Lucia*



*Din'Art gallery and design  
2022*



*Din'Art gallery and design  
2024*



*Mashni Home & Zenberill*

# TAMAL ART- A KISS ON YOUR WALL

## Technology

Thanks to our high-tech machinery we can create and manufacture our unique graphic designs in unique sizes, according to the individual ideas of our customers. Thanks to our XXL wallpaper, printing, and wallpapering surfaces up to 3 meters high and more than 10 meters long without joints are absolutely possible with us.

## Sustainability

We always keep environmental awareness and sustainability in mind during our work, thus, we use environmental friendly, PVC-free raw materials. The printing technology we use meets the highest environmental protection requirements. Our products do not contain health-hazard substances, and there is no odor or solvent evaporation during application.

## Our mission

With 25 years of experience behind us, we can say that there is no result without development. To be able to produce and supply high-quality products for our customers, we constantly attend professional training. We monitor industry trends and regularly participate in both domestic and international professional conferences. We are grateful to have been able to track our development through numerous international projects, while realizing our clients' visions across a wide range of applications.







Nuvole Garden Hotel- Como





Dean's Home Budapest





Wabi Beauty Center Sopron





Astoria Boutique Hotel





Thermal Hotel Visegrád





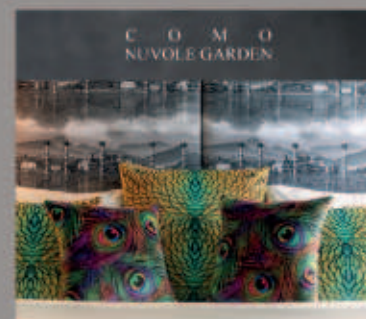
Katalin Kovács National Kayak-Canoe Academy Sukoró





VARRODESIGN  
ATTITUDE

# Collections











LUAN BY LUCIA



LUAN BY LUCIA

# Collections

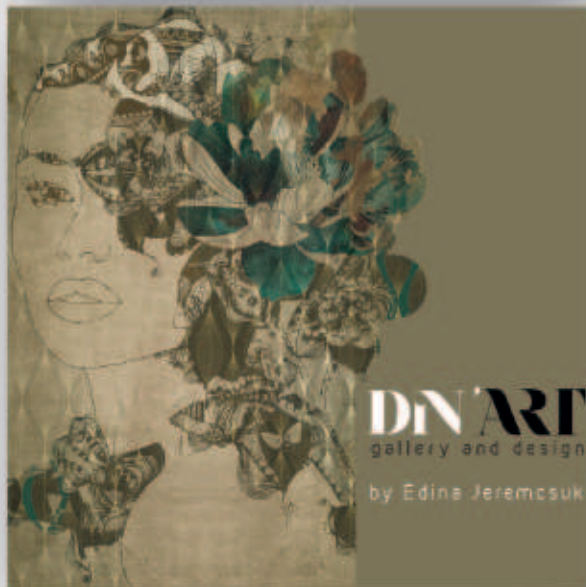
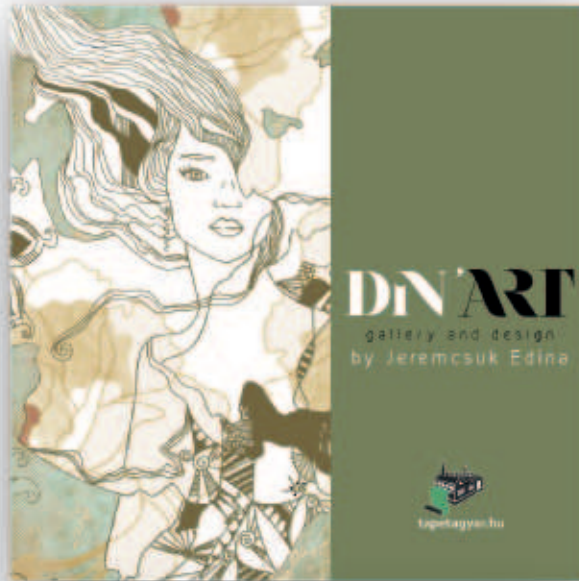




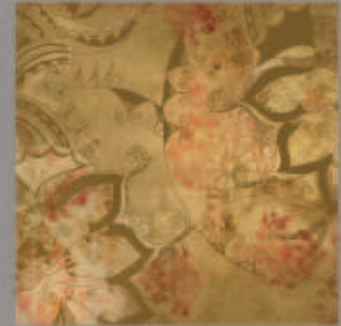
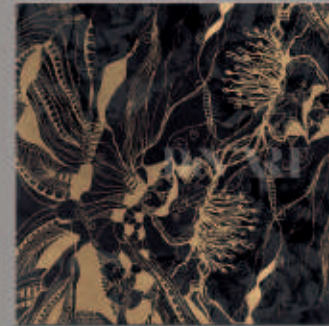




# Some graphics



DINART





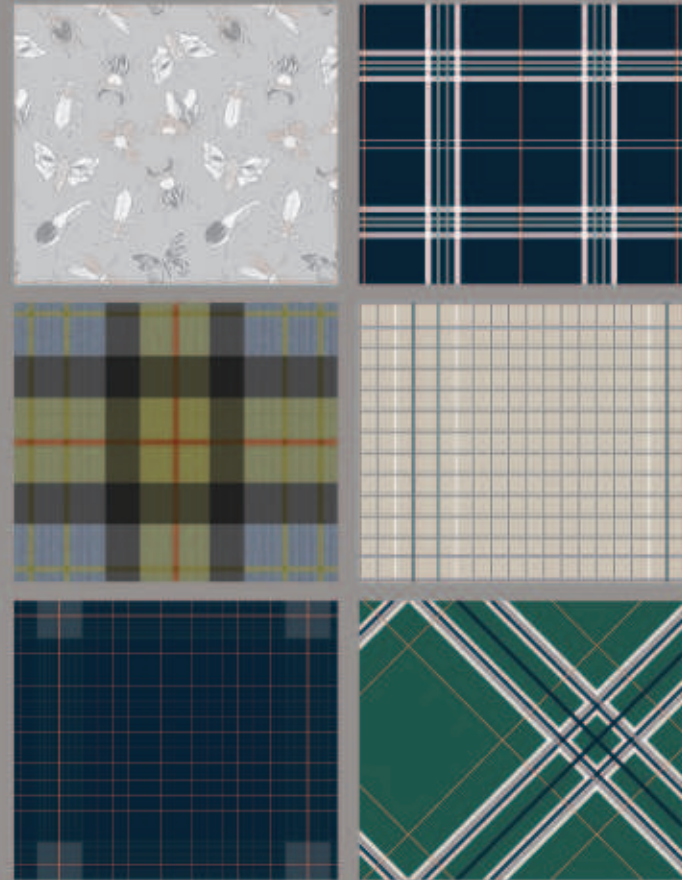






MASHNI HOME

# Collections









# VLIES WALLPAPERS WITHOUT VINYL COATING

Vlies wallpaper is a non-woven, cotton fiber based material. This type of wallpaper provides durable, even walls without visible ripples.

Choosing non-woven wallpapers is a great decision because they are extremely durable, stick well and are very easy to apply.

The special feature of non-woven wallpapers is that they can be peeled off the wall dry without damaging the wall surface. They are easy to work with.

All you need to do is apply the glue to the wall, and place the dry wallpaper on the surface.

The wallpaper is always placed next to each other (sharp fit). Non-woven wallpapers are shape-retaining, do not stretch or shrink.

**Weight :** 147g/m<sup>2</sup>-150g/m<sup>2</sup>

**Surface :** Matt, wool wallpaper

**Fire resistance :** B S1 D0

**Adhesive :** Only the wall need to be glued

**Washable, Water resistant, Scratch resistant :** No

**Maximum printable width :** 117 cm



## Easy Life



PVC-free, wool fiber wallpaper, matte surface, very stable and strong material.

Good image quality can be printed on it, it is a very easy-to-use and removable material.

There is no need to iron after taking it off.

It is recommended to apply it with a sharp joint.

When joining, make sure that the glue does not come out from under the wallpaper or carefully wipe it with a dry cloth, but do not wipe it on the wallpaper!!!

Does not contain harmful substances: certified by Oekotex®, Standard 100, 17.0.16395

## Easy Line



100% wool wallpaper

Environmentally friendly material.

Our thinnest, lightest wallpaper. Its fit is very good, barely visible to the naked eye.

It is more difficult to apply, painter's expertise is recommended.

Thanks to its elastic material (it moves with the house) it is designed for a long service life.

Thanks to its structure, it has a very fine, velvety feel.

When joining, make sure that the glue does not come out from under the wallpaper or carefully wipe it with a dry cloth, but do not wipe it on the wallpaper!





Vlies wallpapers without vinyl coating



# NON-WOVEN WALLPAPERS WITH VINYL COATING

Non-woven wallpaper is a non-woven wallpaper based on vegetable fibers, containing cotton fibers. This type of wallpaper provides durable, even walls without visible ripples.

If you choose non-woven wallpaper, you are choosing an extremely durable wallpaper that adheres well and is easy to apply.

The special feature of non-woven wallpaper is that it can be removed from the wall dry, and is not damaged when the wall surface is removed. It's easy to work with.

Place the non-woven wallpaper dry on the wall smeared with glue (only the wall should be smeared)

We always fit the wallpaper next to each other (sharp fitting).

**Weight :** 250g-350g/m<sup>2</sup>

**Surface :** Wool backing + Vinyl surface

**Fire resistance :** B1 M1 Euro class B-S1-D0

**Adhesive :** Only the wall needs to be glued

**Recommended adhesive :** Metylan Direct

**Maximum printable width :** 104-135 cm



**NW Plaster**



**NW Canvas**



**Wild Silk**



**Petra Sand**



**Rhombus**



**Fine line**



**Mural**



**Fabric**



Excellent wall covering raw material.

It is recommended for the decoration of restaurants, hotels, offices, medical institutions, shops, but it is also a first-class raw material for creating a painting-like decoration.

Mold resistant. Durable, slightly damp – can be cleaned with a soapy cloth, no need to use solvents.

It is very easy to remove.







Non-woven wallpapers with vinyl coating



# 100% VINYL WALLPAPER

Vinyl wallpaper is usually relatively easy to clean and durable, so it is also suitable for heavy duty surfaces. It can also decorate your home's kitchen, dining room and bathroom. Vinyl wallpaper is also great for hiding cracks and unevenness on the surface. To apply vinyl wallpaper, we recommend to use the glue suitable for heavy wallpapers. Apply the adhesive directly to the wall. You will also appreciate the kitchen use of the wallpaper, as it is easy to wash and can even be scrubbed with a weaker brush with soap or dish soap. This type of wallpaper is easy to maintain.

**Weight :** 457g/m<sup>2</sup>

**Installation :** Only the wall needs to be glued

**Fire resistance :** Euro Class B-S2

**Waterproof, Washable, Scratch Resistant:** Yes

**Recommended adhesive :** Flügger 377

**Maximum printable width :** 134 cm



**Canvas 100%**



**Sand Blast 100%**



**Suede 100%**



**Matte 100%**



**Artist Canvas 100%**



**Hard Silk 100%**



Vinyl wallpaper is usually relatively easy to clean and durable, so it is also suitable for more heavily loaded surfaces. You can also decorate your kitchen, dining room and bathroom with it. Very durable material, easy to maintain.





100% vinyl wallpapers



# XXL TEXTILE

High quality gray backed, 100% polyester fabric for indoor applications. Especially recommended for wall coverings and blackout shutters.

This material is a perfect choice for interior design, allowing you to create the most elegant atmosphere. It can be applied up to 50 meters in length without fitting.

It is a first-class material for the corridors of hotels and offices, but it is also a very aesthetic solution for decorating 3-4 meter wall surfaces.

Available width up to 308cm. PVC-free and certified according to Oeko-Tex® 100 IV.

**Weight :** 240g/m<sup>2</sup>

**Surface :** 100 % polyester, woven material (PVC free)

**Fire resistance :** B1

**Adhesive :** Only the wall need to be glued

**Maximum printable width :** 308 cm



## Textiles XXL



It is made from 100% recycled polyester yarn based PET bottles. About 9 PET bottles are used to make one square meter of woven goods.







XXL textile



# EXTRA SURFACES

Recommendations for Use: for creating wall graphics, indoor decorations, and an excellent choice for the exclusive decoration of museums, exhibition halls, night clubs, bars, restaurants and hotels.

Cleaning: can be cleaned with a slightly damp - soapy cloth, no need to use solvents

**Weight :** 160g-350-457g/m<sup>2</sup>

**Surface :** Wool backing or paper + Vinyl surface

**Fire resistance:** B-s1, D0, Euro Class B, s2

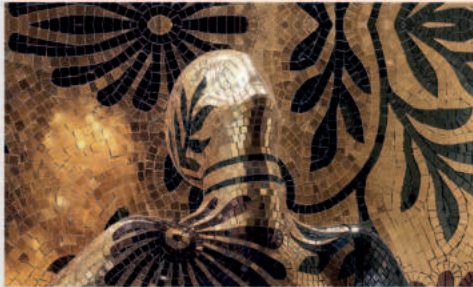
**Adhesive :** Only the wall needs to be glued

**Recommended adhesive :** Metylan Direct

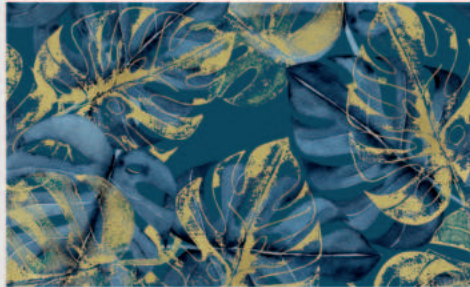
**Maximum printable width:** 104-135 cm



**Platinum**



**Gold Flash**



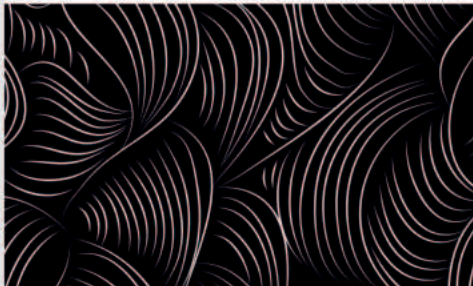
**Silver Flash**



**Satara Steel**



**Golden Stone**



**Silver Stone**



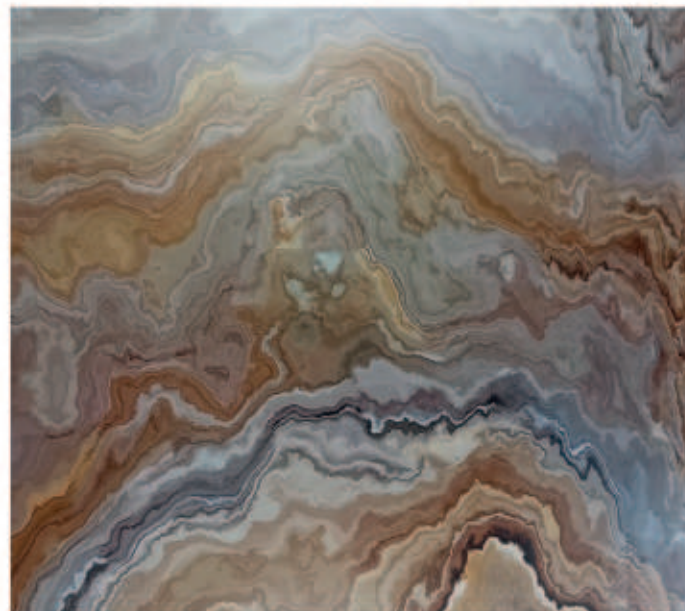
**Pearl**



**NW Silver**







Extra Surfaces- NW Silver